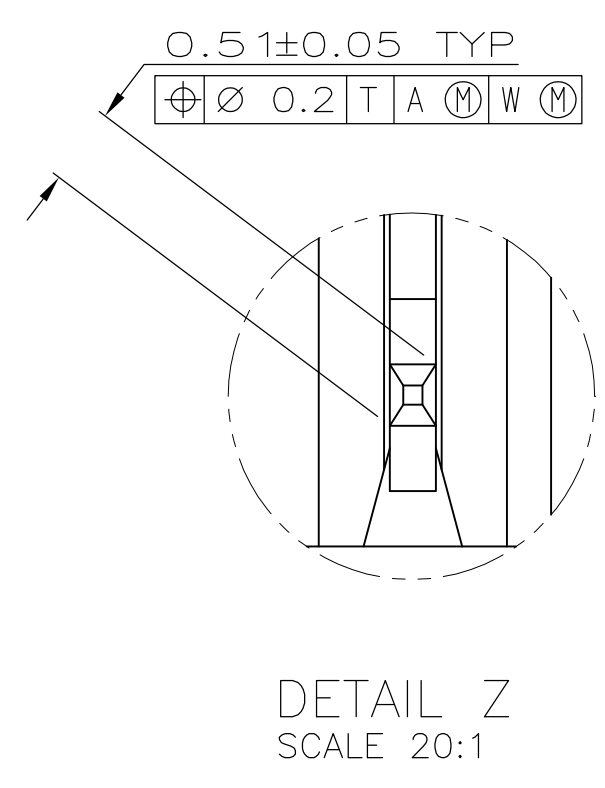
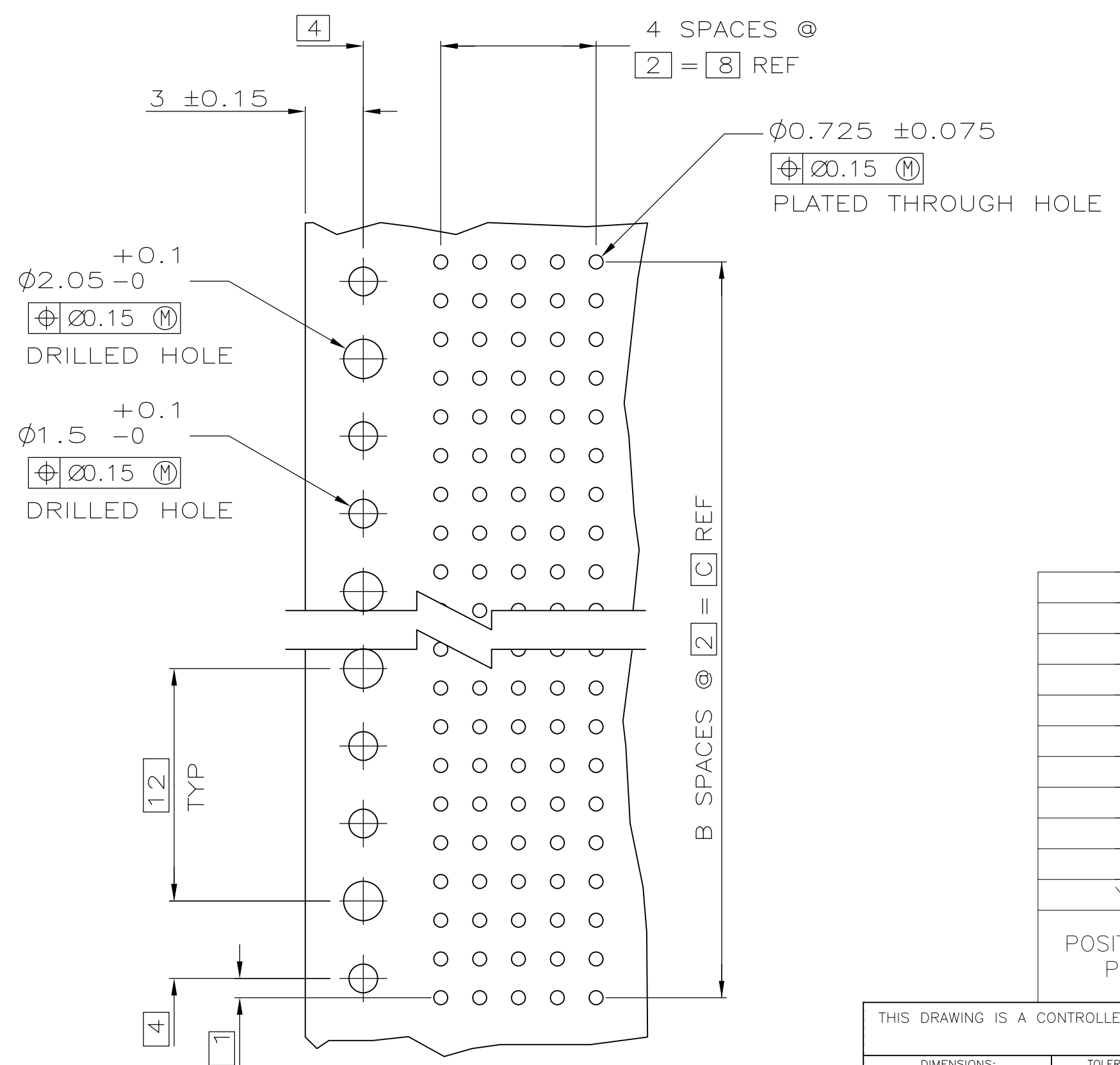
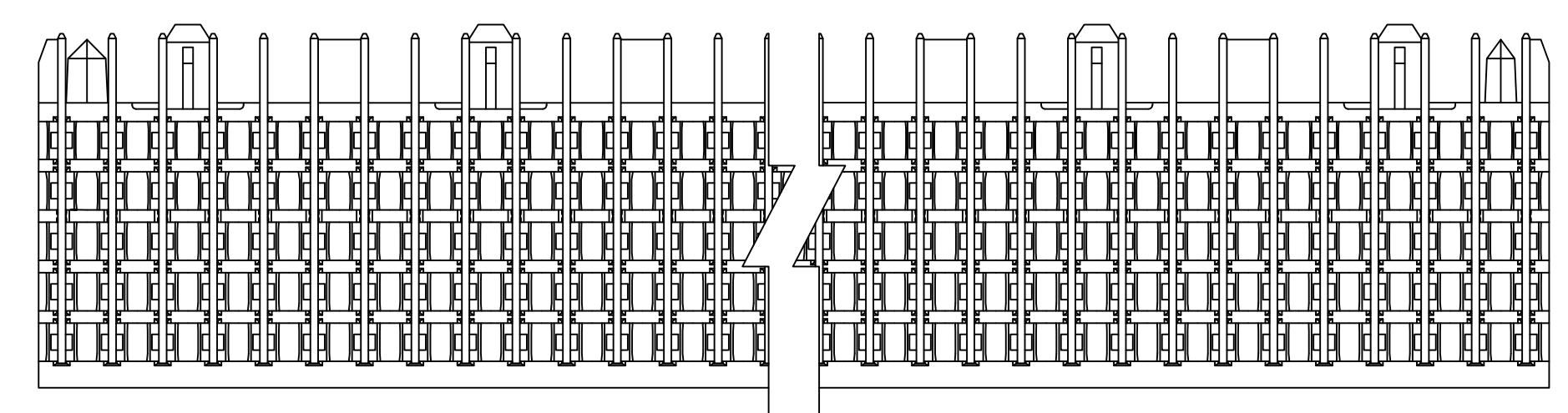
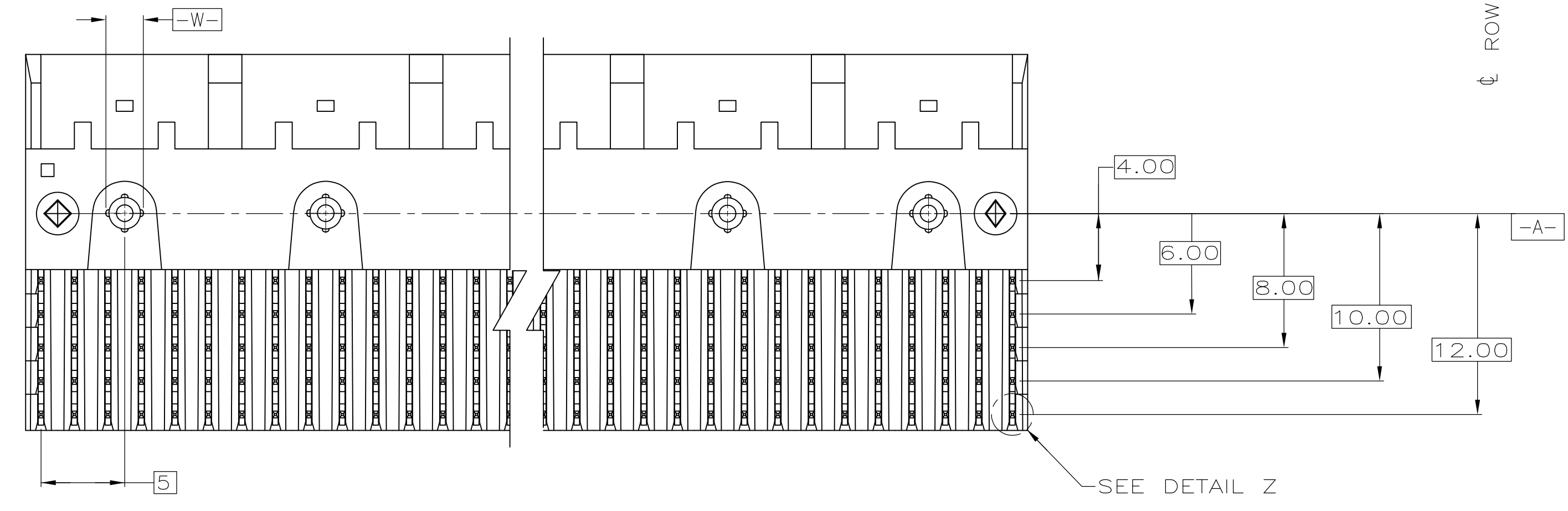
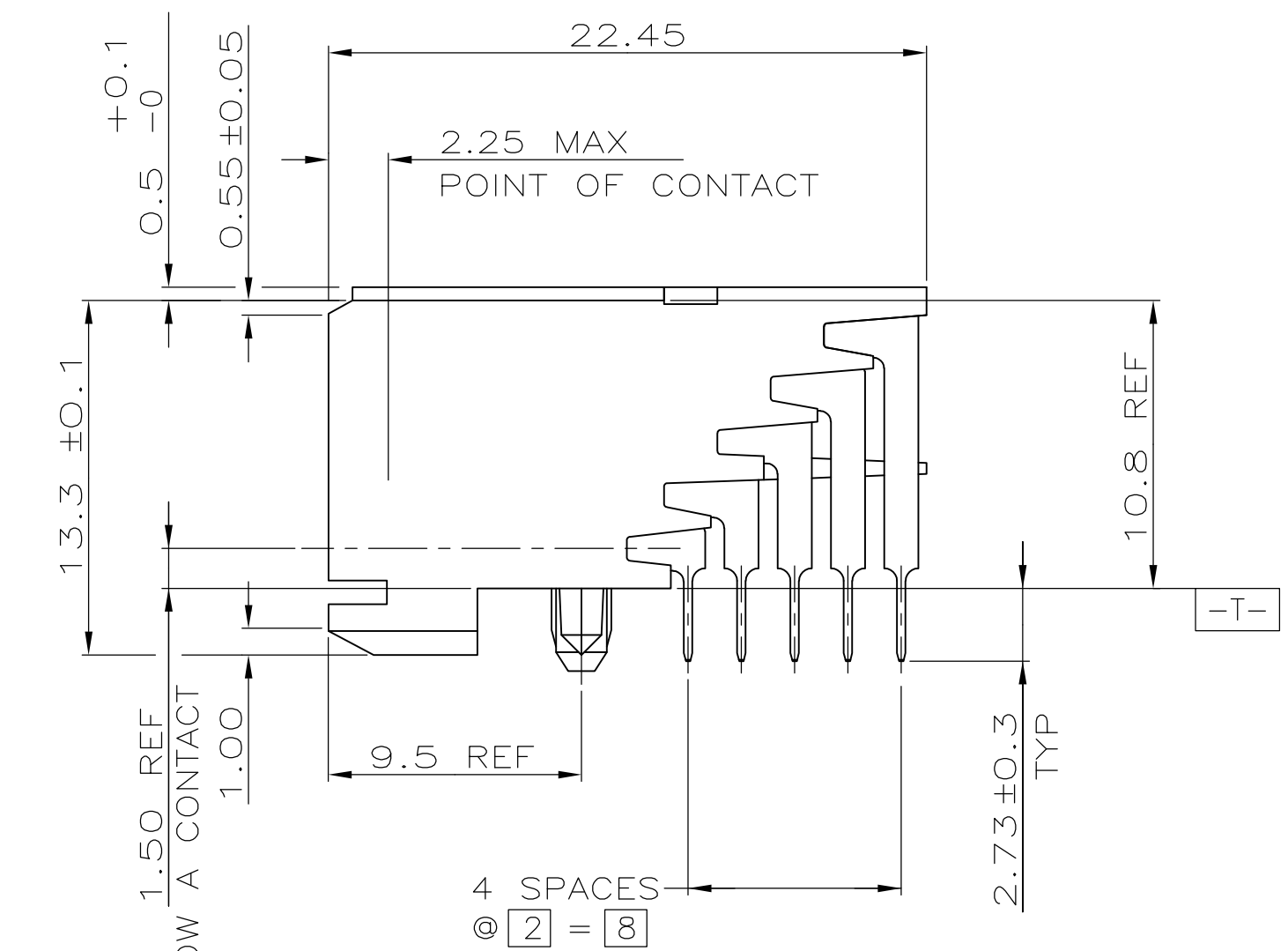
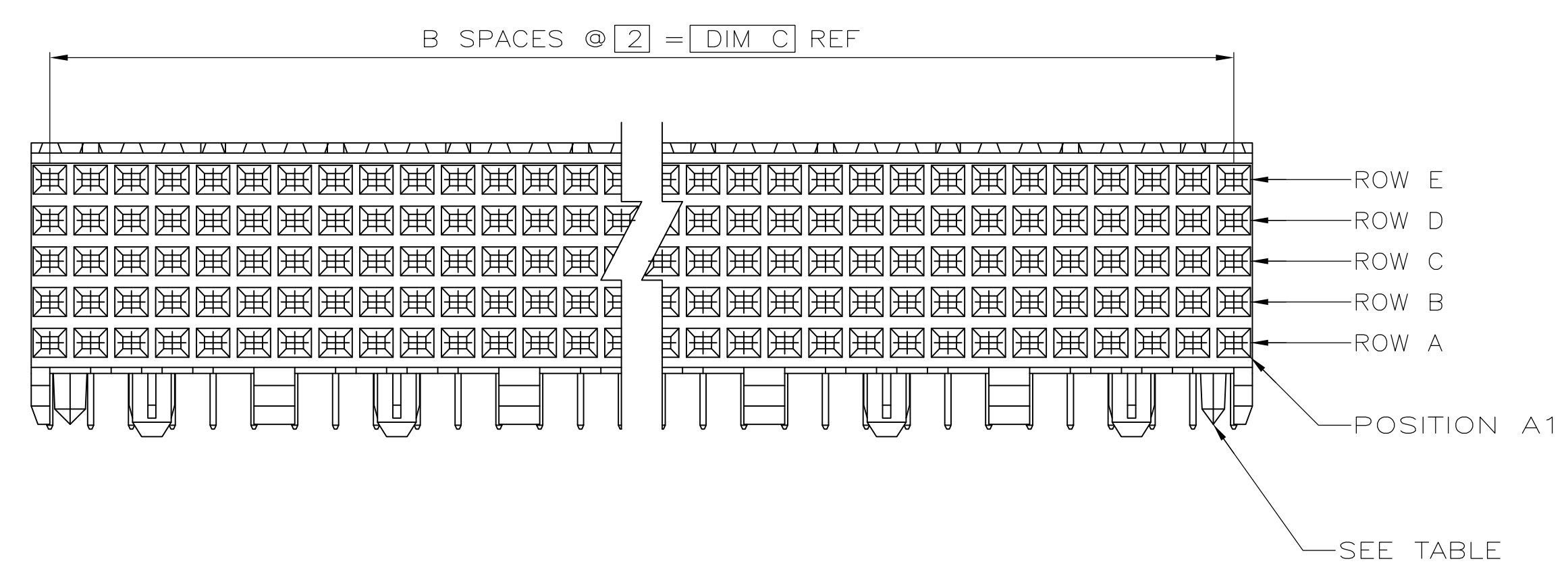


- ① HOUSING MATERIAL: LIQUID CRYSTAL POLYMER
COLOR: NATURAL.
- ② CONTACT MATERIAL: PHOSPHOR-BRONZE.
- ③ CONTACT FINISH:(A)
UNDERPLATE (ENTIRE CONTACT):
0.00127 MIN NICKEL PER SAE-AMS-QQ-N-290
ON MATING SURFACES:
CONFORMS TO ALL TESTING SPECIFIED FOR TELCORDIA
UNCONTROLLED ENVIRONMENT.
ON LEADS:
0.00381 MIN MATTE TIN PER ASTM B 545 OVER UNDERPLATE.
LUBRICATION (MIN MATING SURFACES):
SURFACE CONDITIONER AFTER PLATING.
- ④ PART MARKING LOCATED APPROXIMATELY AS SHOWN.



RECOMMENDED CIRCUIT PATTERN
 PER IPC-D300 TYPE II, CLASS C
 (COMPONENT SIDE)

NO	130	65	131.88	330	1-5223004-1
NO	118	59	119.88	300	1-5223004-0
NO	106	53	107.88	270	5223004-9
NO	94	47	95.88	240	5223004-8
NO	82	41	83.88	210	5223004-7
NO	70	35	71.88	180	5223004-6
NO	58	29	59.88	150	5223004-5
NO	46	23	47.88	120	5223004-4
NO	34	17	35.88	90	5223004-3
NO	22	11	23.88	60	5223004-2
YES	10	3	11.88	30	5223004-1
POSITIONING PEGS	C	B	A	NO OF SIGNAL POSN	PART NUMBER

THIS DRAWING IS A CONTROLLED DOCUMENT.

DIMENSIONS: mm	TOLERANCES UNLESS OTHERWISE SPECIFIED:	0 PLC ± -	1 PLC ± -	2 PLC ± 0.13	3 PLC ± -	4 PLC ± -	ANGLES ± -
MATERIAL		FINISH		SIZE	CAGE CODE	DRAWING NO	RESTRICTED TO
① ②		③ ④		A1	00779	5223004	-
CUSTOMER DRAWING				SCALE	4:1	SHEET	1 OF 1

APPROVED: R. WERTZ
 Tyco Electronics Corporation
 Harrisburg, Pa 17105-3608
 NAME: ASSEMBLY, RECEPTACLE, SIGNAL, RIGHT ANGLE, Z-PACK 2mm FB, 5 ROW, SOLDER LEAD
 DATE: 16APR08